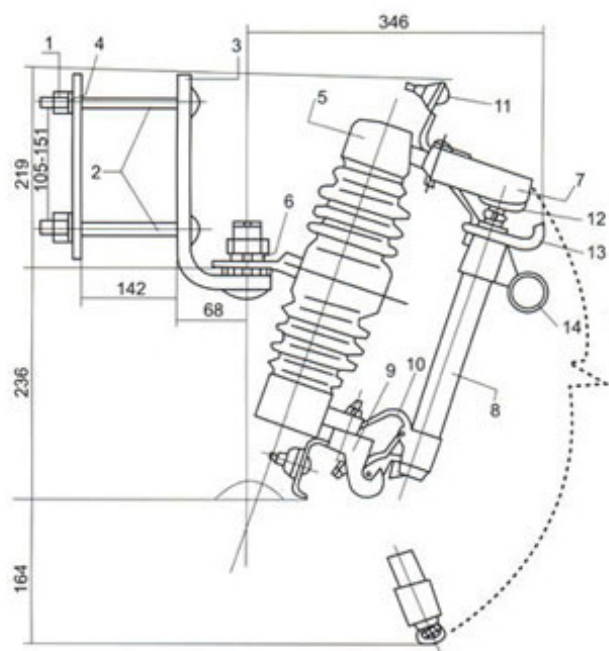


Drop-out fuse cutout and load switching fuse cutout are of outdoor used high voltage protective device,To be connecte incoming feeder of distribution transformer or distribution lines it mainly protect rtansformer or lines from short circuit and overload,and onn/off loding current ,Drop-out fuse cutout is composed of insulat insulator supprts and fuse tube,staatic conntacts is fixed on two sides of insulator support and moving con-tube,tact is installed on two ends of fuse tube.Fuse tube is composed f inside aarc-extinguishing tube outer phenolic compound paper tube or epoxy glass tacts and arc-extiguishing exclosure for switching on/off loading current.

At nnormally working via fuselink tightened dthe fuse tube is fixed to form up of close position,In case system occure faults,fault current result guishing melt immediately and take place electric arc ,which let arc-extin-guishing tube being heated and explode a lot of gas,this Will producehigh pressure and blow off the arc along with tube,After fuselink melt moving contact has no tightened sstrenngth again mehanism is locked ad fuse tube drop out,Cutout now is in open position,When it needs to switchn off during cutout loading ,operator shall via insulating operaating bar pull the moving contact,at its beginning the auxiliary sstatic contact is contacted still ,whiling ppulling the auxiliary conhtact is sepa-raated between auxiliary contacts there occur electric arc and the arc-ex-ttinguishing explode gas to blow off the arc during current passing zero.



1.Nut 2. Long Bolts 3.Mounting Bracket I 4.Mounting Bracket II 5.Porcelain insulator  
6. Spring Washer 7. One-piece channel 8.Fuse Tube 9. Lower 10.Lower contacts 11.Connector  
12. Upper Contacts 13. Attachment Hooks 14.Operation Ring

10KV-15KV:

Type	Rated volt- age (KV)	Rated cur- rent (A)	Brea- king current (A)	Impuls voltage BIL (KV)	Power freque- cy withs- tand voltage (KV)	Cree- page dist- ance (mm)	Weight (kg)	Dimens- ions (CM)
RW20	12	100	1.000	110	42	245	5.9	38.5×
RW20	12	200	1.200	110	42	245	5.9	34.5×11