



Product Introduction

With compact and light weight ,low voltage,high luminance and much higher turn-on/off time.and apt to use with the transistor and integrated circuit together,this LED lamp is widely used in-the communication appsratus,digital device,household appliances decorate light and display scre-en,etc.

With long life 100,000hrs(10+yrs),low consumption (saving power) high brightness,pure lighting color,beautiful decoration.convenient maintenance,the Led lamps is used in illumination fiel-d,e.gspot lamp,rainbow strip.wall lamp,project lamp,ground coner lamp.ball bulb,underground lamp,crystal spot lamp,lawn lamp,race lamp,pool lamp,ceiling lamp,hundle lamp,colorful brick.

With the starting of led semiconductor illumination market.the resarching&application of Power LED are paid more attention by many countriesgovernments and overseas companies.

On the foundation of more than ten years experience,we have resolvedmany technecl problems,onpackaging and craft.and develo-ped0.5,1w,3w power LEd,which are extensively applied in illumination,lighting and flashlight.

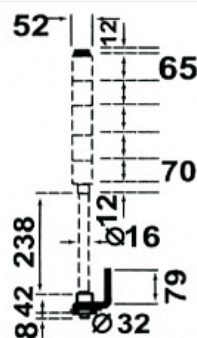
Features

LED light, made of imported high bright LED diodes, is one of most popular lights applicable for alarm lamp. Because of its cold light, it is not scalding but enviroment - protected. Besides, it has high conversion efficiency of photoelectricity, good orientation and long service life. The effective service life can be up to 100,000 hours or above. Especially, the low power consumption and reasonable light curve greatly improve light efficiency and the integrate modular circuit makes performance more reliable,too.



LTA505

| | |
|----------|---|
| Model | LTA505-1,LTA505-2, LTA505-3,LTA505-4 |
| Voltage | DC12V |
| Function | T-light,W-flash, J-with buzzer |
| Color | red,yellow,green,blue |



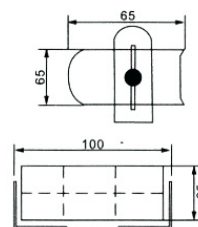
Features

LED light, made of imported high bright LED diodes, is one of most popular lights applicable for alarm lamp. Because of its cold light, it is not scalding but enviroment - protected. Besides, it has high conversion efficiency of photoelectricity, good orientation and long service life. The effective service life can be up to 100,000 hours or above. Especially, the low power consumption and reasonable light curve greatly improve light efficiency and the integrate modular circuit makes performance more reliable,too.



LTE514

| | |
|----------|--------------------------------|
| Model | LTE514 |
| Voltage | DC12V |
| Function | T-light,W-flash, J-with buzzer |
| Color | red,blue,red+blue |



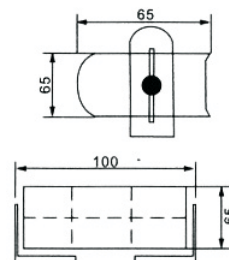
Features

LED light, made of imported high bright LED diodes, is one of most popular lights applicable for alarm lamp. Because of its cold light, it is not scalding but environment-protected. Besides, it has high conversion efficiency of photoelectricity, good orientation and long service life. The effective service life can be up to 100,000 hours or above. Especially, the low power consumption and reasonable light curve greatly improve light efficiency and the integrate modular circuit makes performance more reliable, too.



LTE511

| | |
|----------|---------------------------------|
| Model | LTE511 |
| Voltage | DC12V |
| Function | T-light, W-flash, J-with buzzer |
| Color | red, blue, red+blue |



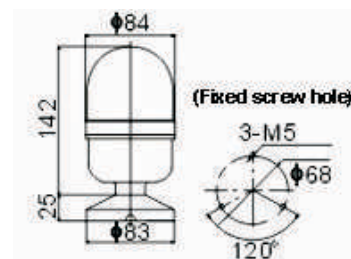
Features

LED light, made of imported high bright LED diodes, is one of most popular lights applicable for alarm lamp. Because of its cold light, it is not scalding but environment-protected. Besides, it has high conversion efficiency of photoelectricity, good orientation and long service life. The effective service life can be up to 100,000 hours or above. Especially, the low power consumption and reasonable light curve greatly improve light efficiency and the integrate modular circuit makes performance more reliable, too.



LTE1083

| | |
|-------------|--------------------------|
| Model | LTE1083 |
| Voltage | DC12/24V, AC110/220V |
| Light power | 5W |
| Color | red, yellow, green, blue |



Features

LED light, made of imported high bright LED diodes, is one of most popular lights applicable for alarm lamp. Because of its cold light, it is not scalding but environment-protected. Besides, it has high conversion efficiency of photoelectricity, good orientation and long service life. The effective service life can be up to 100,000 hours or above. Especially, the low power consumption and reasonable light curve greatly improve light efficiency and the integrate modular circuit makes performance more reliable, too.



LTE108

| | |
|----------|---------------------------------|
| Model | LTE108 |
| Voltage | DC6V |
| Function | T-light, W-flash, J-with buzzer |
| Color | red, yellow |



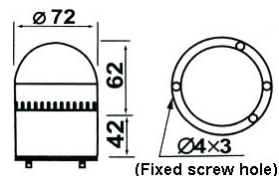


LTE5071

Features

LED light, made of imported high bright LED diodes, is one of most popular lights applicable for alarm lamp. Because of its cold light, it is not scalding but environment-protected. Besides, it has high conversion efficiency of photoelectricity, good orientation and long service life. The effective service life can be up to 100,000 hours or above. Especially, the low power consumption and reasonable light curve greatly improve light efficiency and the integrate modular circuit makes performance more reliable, too.

| | |
|----------|---------------------------------|
| Model | LTE5071 |
| Voltage | DC12/24V |
| Function | T-light, W-flash, J-with buzzer |
| Color | red, yellow, green, blue |



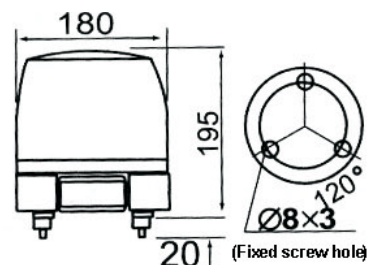
Features

LED light, made of imported high bright LED diodes, is one of most popular lights applicable for alarm lamp. Because of its cold light, it is not scalding but environment-protected. Besides, it has high conversion efficiency of photoelectricity, good orientation and long service life. The effective service life can be up to 100,000 hours or above. Especially, the low power consumption and reasonable light curve greatly improve light efficiency and the integrate modular circuit makes performance more reliable, too.



LTE5181

| | |
|---------|-----------------------------|
| Model | LTE5181 |
| Voltage | DC12/24 AC110/220 |
| Color | red, yellow, green, blue |



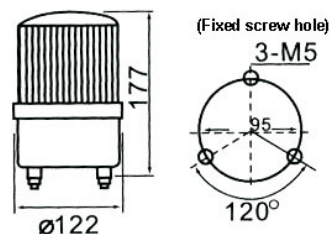
Features

LED light, made of imported high bright LED diodes, is one of most popular lights applicable for alarm lamp. Because of its cold light, it is not scalding but environment-protected. Besides, it has high conversion efficiency of photoelectricity, good orientation and long service life. The effective service life can be up to 100,000 hours or above. Especially, the low power consumption and reasonable light curve greatly improve light efficiency and the integrate modular circuit makes performance more reliable, too.



LTE5161

| | |
|---------|-----------------------------|
| Model | LTE5161 |
| Voltage | DC12V |
| Color | red, yellow, green, blue |



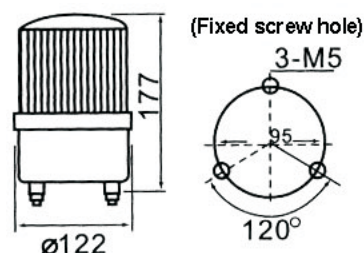
Features

LED light, made of imported high bright LED diodes, is one of most popular lights applicable for alarm lamp. Because of its cold light, it is not scalding but environment-protected. Besides, it has high conversion efficiency of photoelectricity, good orientation and long service life. The effective service life can be up to 100,000 hours or above. Especially, the low power consumption and reasonable light curve greatly improve light efficiency and the integrate modular circuit makes performance more reliable, too.



LTE5121

| | |
|---------|---------------------------|
| Model | LTE5121 |
| Voltage | DC12V |
| Color | red,yellow, green,blue |



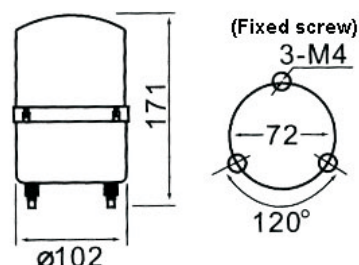
Features

LED light, made of imported high bright LED diodes, is one of most popular lights applicable for alarm lamp. Because of its cold light, it is not scalding but environment-protected. Besides, it has high conversion efficiency of photoelectricity, good orientation and long service life. The effective service life can be up to 100,000 hours or above. Especially, the low power consumption and reasonable light curve greatly improve light efficiency and the integrate modular circuit makes performance more reliable, too.



LTE5104

| | |
|---------|---------------------------|
| Model | LTE5104 |
| Voltage | DC12V |
| Color | red,yellow, green,blue |



Features

LED light, made of imported high bright LED diodes, is one of most popular lights applicable for alarm lamp. Because of its cold light, it is not scalding but environment-protected. Besides, it has high conversion efficiency of photoelectricity, good orientation and long service life. The effective service life can be up to 100,000 hours or above. Especially, the low power consumption and reasonable light curve greatly improve light efficiency and the integrate modular circuit makes performance more reliable, too.



LTE5103

| | |
|---------|---------------------------|
| Model | LTE5103 |
| Voltage | DC12V |
| Color | red,yellow, green,blue |