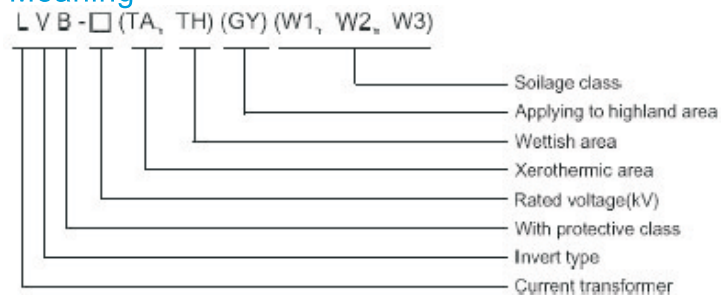


Brief Introduction

LVB-110 and LVB-132,145,lvb-220,330KV type current transformer is suitable for current measuring and protection.The products observe the rules of IEC and national standatd GB-1208-1997current transformers.

The structure of LVB current transformers is inverted type with oil-pear insulation.The top of it is made of aluminum with secondary body inside it and the primary pole conduct electric go through the iron core.The main insulation is rolled over the secondary winding completely,and is made up of several capacity screen,the main insulation is divided into two parts,the head insulation and the pole insulation.the top of the product is equipped with stainless steel bellow.the outer insulation is strength porcelain,the secondary terminal board is immersed with epoxy.

Type and Meaning



Technical characteristic

1.It accords to the GB1208-1997current transformer· and IEC 185 of IEC60044.

2.This product has the character of limited tightness.All the tightness compartment do not be put into ultraviolet radiation so that we solve the problem of chap of tightness rubber and aging,these product is more reliable and has longer life,we ensure that it can run 20 years without leakage.

3.The porcelain is equipped with irrigating flange.the surface of flange use hot zincfication to enhance the wholly mechanism of product and has beautiful outlook.

4.With higher accuracy class and protecting characteristic.Our product is equipped with 0.2s,0.5s,0.2.0.5,5P,10P,TPY class and so on.

This product is equipped with 4 to 6 secondary winding and it can reach the requirement of customer.

5.the primary conductor has the high quality of temperature rising and dynamic thermal stability.

6.The oil valve has unique design,we get oil with injeetor to avoid oil from air,to ensure accuracy of oil test.

7.With epoxy secondary terminal board,the product is enhanced secondary insulation and tightness.

8.All the standard compartment are plated Dakelo.We ensure that the product don't rust for 20 years.

9.The main insulation,roll over the secondary winding and has the high quality of dissipate heat.

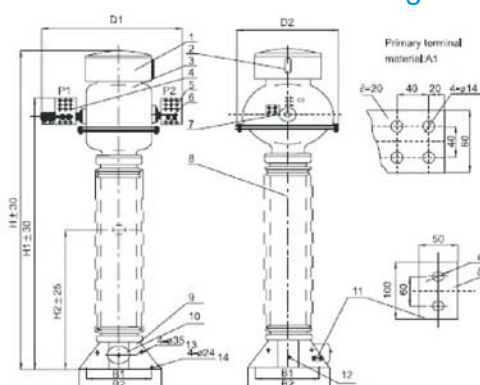
10.With advanced work craft we ensure the insulation of product,the wholly dielectric loss is below 0.4%,We keep dielectric loss long Unchange after the product is running.



Technical Data

| TYPE | | LVB-110 | LVB-132 | LVB-220 | LVB-330 |
|-------------------------------|----------------------------|----------------------------|-----------------|----------------------------|----------------|
| Highest Voltage for equipment | | 126KV | 145KV | 252KV | 363KV |
| Rated insulation level | | 126/185/450KV | 145/275/650KV | 252/460/1050KV | 363/510/1175KV |
| Rated frequency | | 50HZ or 60HZ | | | |
| Rated primary current | | 600-2000(A)2×300-2×1000(A) | | 600-2000(A)2×300-2×2500(A) | |
| Rated secondary current | | 1A OR 5A | | | |
| Accuracy Class | Protective class | 5p,10p | | | |
| | Accuracy limit factor | 15,20,30,40 | | | |
| | Measuring class | 0.5,0.2,0.5S,0.2S | | | |
| | Instrument security factor | FS≤5,FS≤10 | | | |
| Rated output | | 30-50VA | | | |
| Ith | | 50KA(3S) | | 63KA(3S) | |
| Idyn | | 125KA | | 160KA | |
| Creepage distance | | 3150-3910mm | 3625-3910mm | ≥6300mm | 9050mm |
| Flash distance | | 1010-1240mm | 1240-1400mm | ≥2200mm | ≥2650mm |
| Oil-weight/Gross weight | | 100/580 | 110/600 | 185/900 | 290/1450 |
| Pack dimensions | | 620×1000×2690mm | 620×1000×2690mm | 3900×1100×9090 | 4750×1650×1150 |

LVB Series Current Transformer Outline Drawing



- 1.Bellow
- 2.Window for inspecting oil
- 3.Oil conservator
- 4.Primary terminal P1
- 5.Primary teminal P2
- 6.Connector
- 7.Connect the line clip
- 8.Porcelain bushing
- 9.Base
- 10.Secondary terminal box
- 11.Earthing board
- 12.Oil-draining valve
- 13.Lifting hole
- 14.Mounting hole

| TYPE | H | H1 | H2 | D1 | D2 | B1 | B2 |
|-------------------------|------|------|------|------|------|-----|-----|
| LVB-110W ₂ | 2600 | 2100 | / | 910 | 610 | 450 | 520 |
| LVB-110GYW ₂ | 2700 | 2200 | / | 910 | 610 | 450 | 520 |
| LVB-132W ₂ | 3775 | 3275 | 1985 | 1035 | 860 | 600 | 750 |
| LVB-220W ₂ | 4650 | 3800 | 2700 | 1600 | 1100 | 600 | 750 |