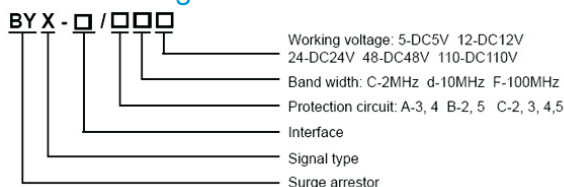


Introduction

BYX-RJ11 series surge protective device is suiting to such as modem, DDN special line, fax-machine and telephone-machine which protects the electric network shocked by the thunder or surge over voltage.

Model and meaning



BYX-RJ11/AD110



BYX-RJ11/CC48

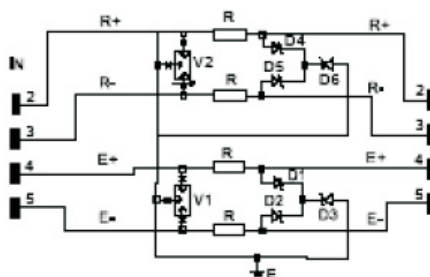
Technical Parameters

Item	BYX-RJ11								
	AC110	BC110	CC110	AC48	BC48	CC48	AC24	BC24	CC24
operating voltage Un	DC110V			DC48			DC24V		
Maximum continuous operating voltage	DC150V			DC60V			DC30V		
Voltage limiting Up	≤500V			≤200V			≤120V		
Normal discharge current In	3kA								
Impulse protective voltage Ur(1kw/?s)	≤600V								
Frequency range	2MHz								
Insertion loss	<0.5db								
Interface form	RJ11								
Protective feet	3, 4	2, 5	2,3,4,5	3, 4	2, 5	2,3,4,5	3, 4	2, 5	2,3,4,5
Protective way	Full protective mode								
Response time	<1ns								
Outer covering material	Shiled aluminum								

Installation

1. Installed at the interface of the data line between LPZ1 and LPZ3.
2. Suiting to the terminal device such as modem (ISDN, ADSL), DDN special line, fax-machine and telephone machine.
3. Being installed the RJ11 interface, it can make up signal defence thunder case with many poles or return circuits according to the request of the customers.

Electric principal



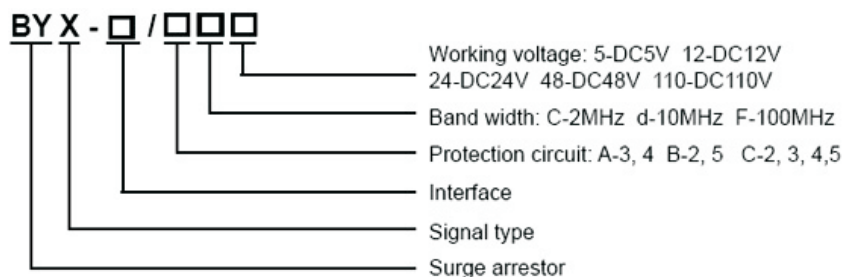
Introduction

BYX-RJ45 is special used in the network system and its different types can satisfy different defence thunder areas. The connector of its input and output is RJ45 male/female connector, which is easily connected and installed. The design of the product is according with IEC1643-2DRAFT standard, and it is main used in service equipment, inner LAS and HuB, and boardband RJ45 interface protection for protecting the equipment which will be damaged by the over voltage of the earth or the line inductance.



BYX-RJ45

Model and meaning



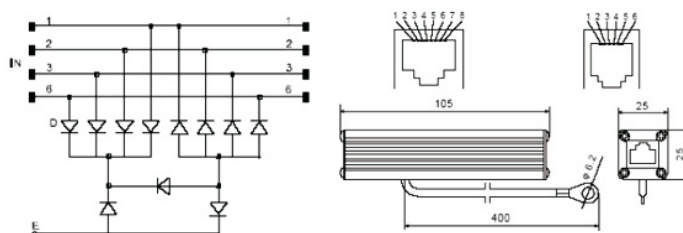
Technical Parameters

Item	BYX-RJ45							
	DD5	ED5	DD12	ED12	DD24	ED24	ED48	ED48
operating voltage Un	DC5V		DC12V		DC24V		DC48V	
Maximum continuous operating voltage	DC6V		DC15V		DC30V		DC60V	
Voltage limiting Up	≤40V		≤60V		≤120V		≤200V	
Normal discharge current In	3kA							
Impulse protective voltage Ur(1kv/?s)	≤600V							
Frequency range	10MHz							
Insertion loss	<0.3db							
Interface form	RJ45							
Protective feet	1,2,3,6	3,4,5,6	1,2,3,6	3,4,5,6	1,2,3,6	3,4,5,6	1,2,3,6	3,4,5,6
Protective way	Full protective mode							
Response time	<1ns							
Outer covering material	Shiled aluminum							



BYX-RJ45

Electric principal & Dimension



Product Features

1. Small section of return circuit , excellent protective performance.
2. Little rest voltage, fast response.

With double protective of the over voltage and over current

Installation Location and Application

1. Installed at the RJ45 interface of the data line between LPZ1 and LPZ3.
2. Applied in various computer network such as ETHERNET, LAN, Token-Ring Network), Router, server, Hub, boardband.